



The DDP WAY *Folder Volumes*

Ethernet SAN and DDP Webinterface: one Volume, one Namespace, Folders and Folder Volumes

Everyone knows SAN is much faster than NAS. The DDP is a SAN using ethernet. Thus very fast and easy to install. But is the DDP also easy to work with?

Yes, no matter how many users collaborate. There is always a good overview who has access to what, for how long and with what access rights. This is because of the famous DDP ingredients:

DDP volume, Folder Volumes and Workflow Manager.
The starting point is to create one DDP volume with a bunch of folders (directories). Then there is one namespace with the following benefits:

- * Backup, MAM and search engines only "see" one DDP volume
- * Overview of all access permissions with changes becoming effective instantly

These advantages are already there when working with one DDP volume and folders. We can go one step further by assigning volume properties to folders thus defining Folder Volumes.

This adds the following benefits:

- * Avid edit applications require their Avid MediaFiles directory under the root. And if there is one namespace there is one root. With Folder Volumes there is one namespace with any number of roots
- * Users have access to all capacity (controlled by quota)
- * Admin can continuously monitor which user is active via the Users Active page
- * Folder Volumes appear as volumes on the desktop giving a better overview
- * Access on Folder Volumes is not restricted by level higher access right settings
- * Caching, load balancing and Data Locations can be assigned to Folder Volumes

The screenshot displays the DDP Webinterface with the following sections:

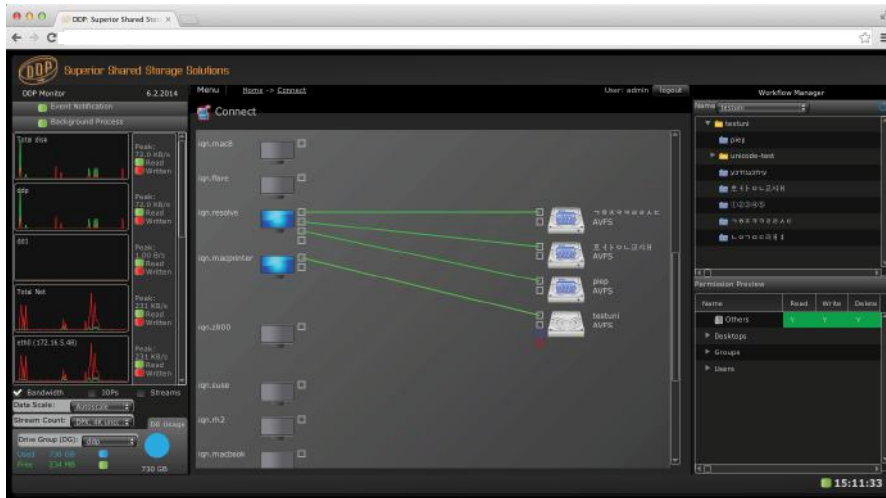
- DDP Monitor:** Shows data activities for Total Net, eth0, eth1, eth2, and eth3. Includes a 'Disk Usage' section with 'Used 109.89 GB' and 'Free 139.31 GB'.
- Operations:** Includes icons for Connect, Tableview, Users, Groups, DDP Volumes Drive Folders, Profile, and R/W Limiting.
- Workflow Manager+:** Features Admin Pwd, Edit Access, LDAP Connect, and Folder Volumes.
- System Information:** Includes Event Log, Volume Check, System, Drive Check, and Users Active.
- Settings:** Includes Icon Size, Archiware, E-mails, Pre-read, Quota, Defrag, and Time Server.
- DDP Installation:** Includes Network, Desktops, Installers, APC, UPS, Connections, Raidcards, Nagios, Remote Diag, and Pwd/Restart.
- Workflow Manager+ (Right Panel):** Lists folders like VFX Scans, Goldeneye, Ingest1, Ingest2, projectautumnnew, projectspring (selected), projectsummer, projectwinter, protocols, and restore. Below it is a 'Permission Preview' table.

Name	Read	Write	Delete
Others	Y	Y	Y
Desktops			
Groups			
Users			
admin	Y	Y	Y
jaap	Y	Y	Y
bart	Y	Y	Y
arie	Y	Y	Y
jan	Y	Y	Y

At the bottom of the interface, the text 'THE DDP WAY' is displayed in large green letters, and the time '15:16:47' is shown in the bottom right corner.



The DDP WAY *Folder Volumes*



The Connect screen

Desktops are displayed on the left. The greyed out ones maybe switched off or are in another state. The lines represent the ethernet SAN connection. The icon on the right without a folder icon in it is the DDP Volume. The icons with are the Folder Volumes.

In this setup macprinter is the admin desktop and admin has the DDP Volume on his screen. The other desktop is one with two Folder Volumes available.

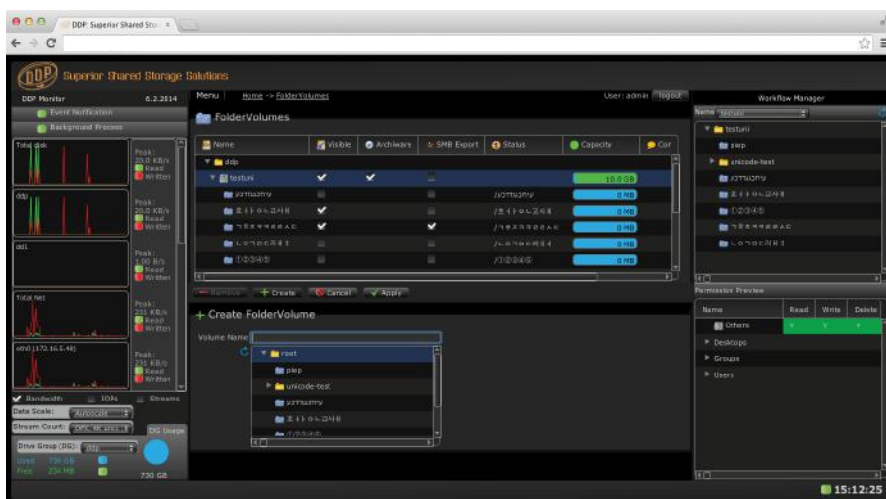
In a setup with an administrator, users automatically get their Folder Volumes on their desktops when they login. The administrator on the other hand has the DDP volume with folders and Folder Volumes on the screen. This is because all Folder Volumes under volumes root show up as folders on the volume.

The webinterface on the left shows the various modes of activity in streams, bandwidth or IOPs. Also alert messages are notified there.

Pressing one of the icons in the middle part of the webinterface opens up that particular function. E.g. to edit, edit or remove a user, the user icon is pressed.

DDP volume or Folder Volumes can be made, desktops, bandwidth limiting, users and groups can be entered. Access rights can be managed via the Workflow Manager. System information is available. System checks can be performed and Settings can be managed. IP addresses can be set and additional services called upon.

On the right it is displayed which users have access to which folder or Folder Volumes with what rights. Maintenance of the DDP is also controlled by the webinterface.



The Folder Volumes screen

The window in the middle is basically identical with the DDP Volume window. Underneath Create Folder Volume the yellow icons are folders and the blue one Folder Volumes. When a yellow one is selected and Apply is pressed it turns into a Folder Volume with the blue icon also in the Workflow Manager.